



Welbilt Deutschland GmbH

Talstraße 35
82436 Eglfing
Deutschland

www.convotherm.com

Technical Data

Model	Rated voltage	Frequency	consumption	Rated current
Cmn 6.06 pro	380V - 415V	50/60Hz	5,1kW - 6,1kW	7,8A - 8,4A

articlenumber circuit diagram 5336500-10029_00
articlenumber device

Created on 15.04.2025 CONVOTHERM®
Edit date 28.05.2025 by (short name) ALTENDORF.A

Table of contents

Con_Inhaltsverzeichnis							
structur	&	Page	Page description	Creator	Edited by	Date manually	Date Automatic
higher-order Administrative Documents	&BAA	1	Title page / cover sheet	ALTENDORF.A	ALTENDORF.A		28.05.2025
higher-order Lists (Documents concerning)	&BAB	2	Table of contents : &BAA/1 - ==CS1=LGT+CC1&EFS/1	ALTENDORF.A	ALTENDORF.A		28.05.2025
higher-order Lists (Documents concerning)	&BAB	2.a	Table of contents : ==CS1=CT1+CC1&EFS/1 - ==CS1=CS1+WC1&EFS/2	ALTENDORF.A	ALTENDORF.A		28.05.2025
higher-order Explanatory Documents	&BDB	1	Overview functions	ALTENDORF.A	ALTENDORF.A		28.05.2025
higher-order Explanatory Documents	&BDB	2	Overview locations	ALTENDORF.A	ALTENDORF.A		28.05.2025
higher-order Explanatory Documents	&BDB	3	Overview document types	ALTENDORF.A	ALTENDORF.A		28.05.2025
=PLC +WC1 Combi oven Control Wiring compartment							
Electrical engineering Functional overview documents	&EFA	1	Overview Main board complete	ALTENDORF.A	ALTENDORF.A		28.05.2025
Electrical engineering Functional overview documents	&EFA	2	Overview Main board Network connector	ALTENDORF.A	ALTENDORF.A		28.05.2025
Electrical engineering Functional overview documents	&EFA	3	Overview Expansion board	ALTENDORF.A	ALTENDORF.A		28.05.2025
Electrical engineering Circuit documents	&EFS	1	Wiring overview	ALTENDORF.A	ALTENDORF.A		28.05.2025
=SU1 +MT1 Combi oven Power supply Mounting panel							
Electrical engineering Circuit documents	&EFS	1	Power supply	ALTENDORF.A	ALTENDORF.A		28.05.2025
Electrical engineering Circuit documents	&EFS	2	Power supply	ALTENDORF.A	ALTENDORF.A		28.05.2025
=CV1 +WC1 Combi oven Convection system 1 Wiring compartment							
Electrical engineering Circuit documents	&EFS	1	Hot air Generation 1	ALTENDORF.A	ALTENDORF.A		28.05.2025
=IJ1 +WC1 Combi oven Water injection Wiring compartment							
Electrical engineering Circuit documents	&EFS	1	Sprayer	ALTENDORF.A	ALTENDORF.A		28.05.2025
Electrical engineering Circuit documents	&EFS	2	Sprayer	ALTENDORF.A	ALTENDORF.A		28.05.2025
=MOT +MT1 Combi oven Oven fan Mounting panel							
Electrical engineering Circuit documents	&EFS	1	Motor	ALTENDORF.A	ALTENDORF.A		28.05.2025
=COL +WC1 Combi oven Condenser box Wiring compartment							
Electrical engineering Circuit documents	&EFS	1	Condenser box	ALTENDORF.A	ALTENDORF.A		28.05.2025
=CL1 +WC1 Combi oven Cleaning 1 (Solid to Liquid) Wiring compartment							
Electrical engineering Circuit documents	&EFS	1	Cleaning	ALTENDORF.A	ALTENDORF.A		28.05.2025
=LGT +CC1 Combi oven Oven light Oven cavity							
Electrical engineering Circuit documents	&EFS	1	Lamp	ALTENDORF.A	ALTENDORF.A		28.05.2025

Table of contents

Con_Inhaltsverzeichnis

structur	&	Page	Page description	Creator	Edited by	Date manually	Date Automatic
=CT1 +CC1	Electrical engineering Circuit documents &EFS	Combi oven Core temperature probe Oven cavity					
		1	Sensor (Option)	ALTENDORF.A	ALTENDORF.A		28.05.2025
=COO +WC1	Electrical engineering Circuit documents &EFS	Combi oven Cooling Wiring compartment					
		1	Function	ALTENDORF.A	ALTENDORF.A		28.05.2025
		2	Automatic Automatic machine. Door catch	ALTENDORF.A	ALTENDORF.A		28.05.2025
=HMI +MT1	Electrical engineering Circuit documents &EFS	Combi oven HMI Mounting panel					
		1	Control panel	ALTENDORF.A	ALTENDORF.A		28.05.2025
	Electrical engineering Circuit documents &EFS	2	Control panel	ALTENDORF.A	ALTENDORF.A		28.05.2025
=CS1 +WC1	Electrical engineering Circuit documents &EFS	Combi oven ConvoSense Wiring compartment					
		1	ConvoSense	ALTENDORF.A	ALTENDORF.A		28.05.2025
	Electrical engineering Circuit documents &EFS	2	ConvoSense	ALTENDORF.A	ALTENDORF.A		28.05.2025

Example

Description
Standards
EPLAN
Nesting

==CS1

Combi oven
Functional assignment
Functional assignment
No

=CV1

Hot air 1
Functional aspect
Function designation
No

==CS1 Combi oven

=PLC Control

=SU1 Power supply

=CV1 Convection system 1

=IJ1 Water injection

=MOT Oven fan

=COL Condenser box

=CL1 Cleaning 1 (Solid to Liquid)

=LGT	Oven light
-------------	------------

=CT1 Core temperature probe

=COO Cooling

=HMI HMI

=CS1 ConvoSense

			Date	28.05.2025	Observe protection notices in accordance with ISO 16016	=	Overview functions	articlenumber circuit diagram			==	
			Ed.	ALTENDORF,A				5336500-10029_00			=	
			Appr					articlenumber device		Project description		+
Modification	Date	Name	Original					17.0		-	higher-order Explanatory Documents	& BDB 1

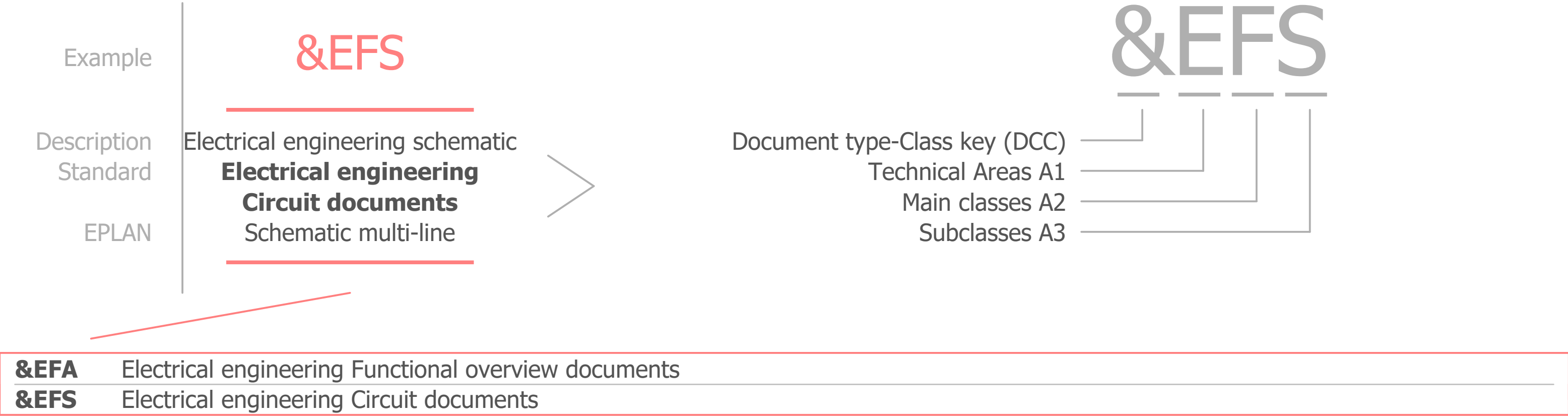
Example

+MT1

Description
Standards
EPLAN
Nesting

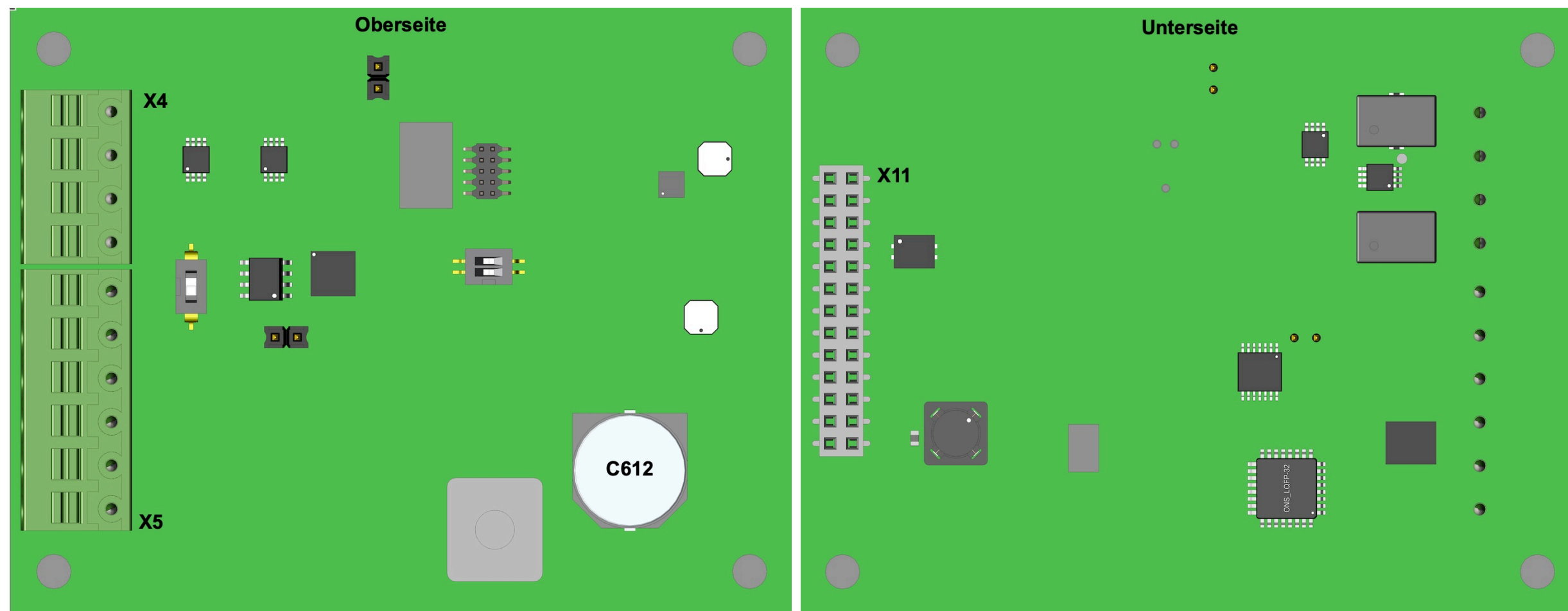
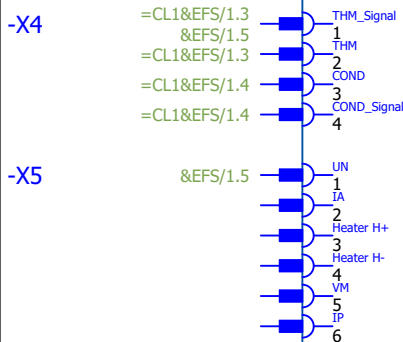
Mixer 1
City
Installation site
No

+EXT	External Installation site
+MT1	Mounting panel
+WC1	Wiring compartment
+CC1	Oven cavity
+DO1	Unit door



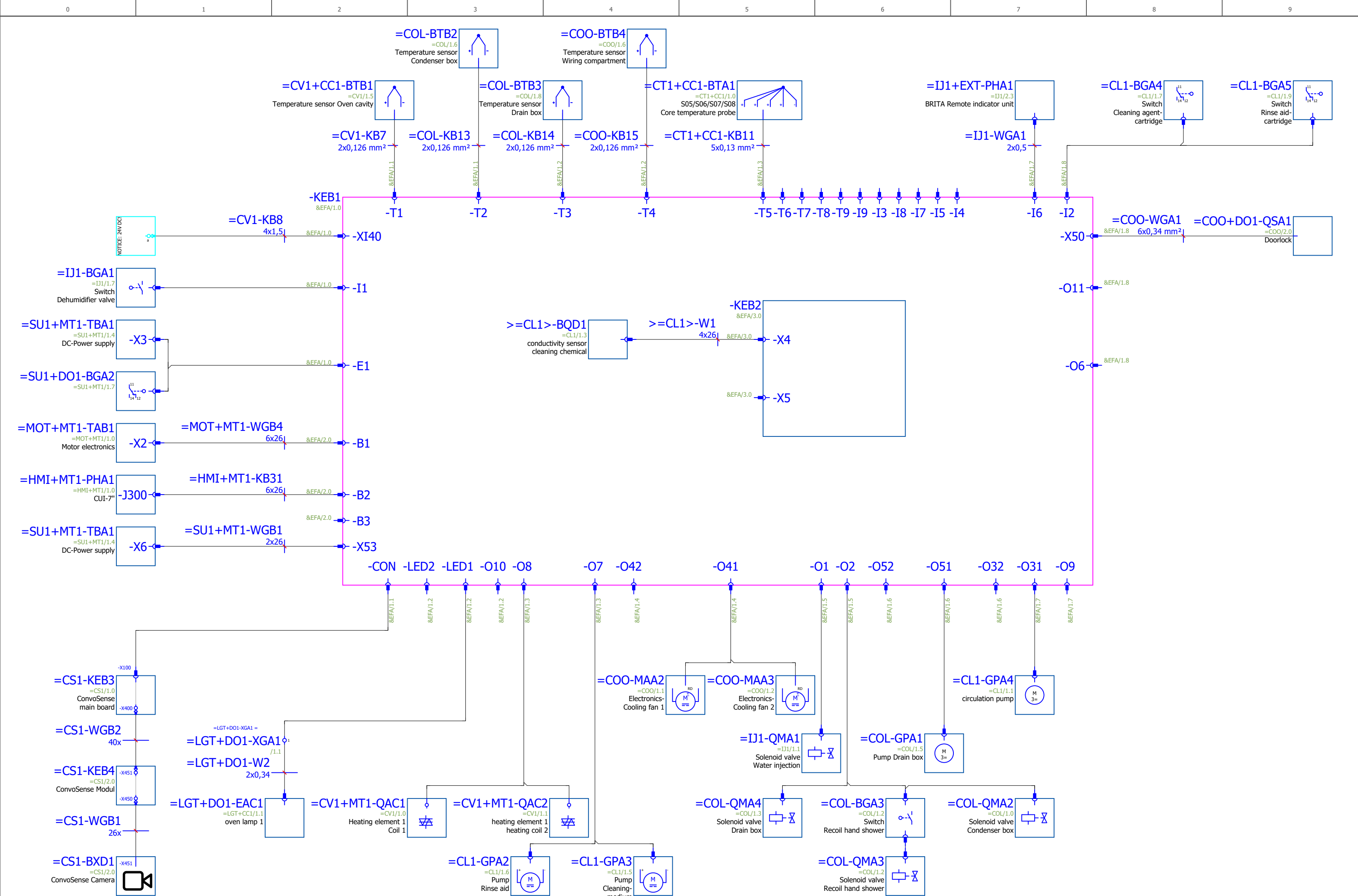


PLC

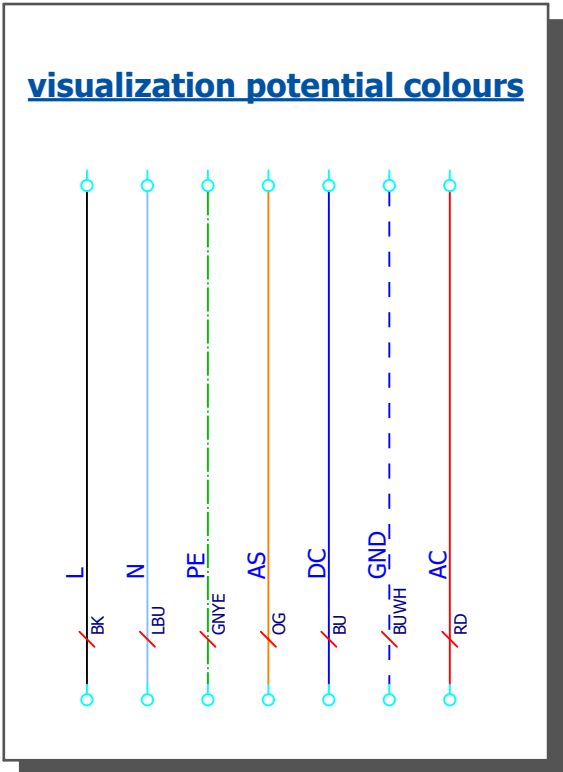


* further articles see Bill of materials

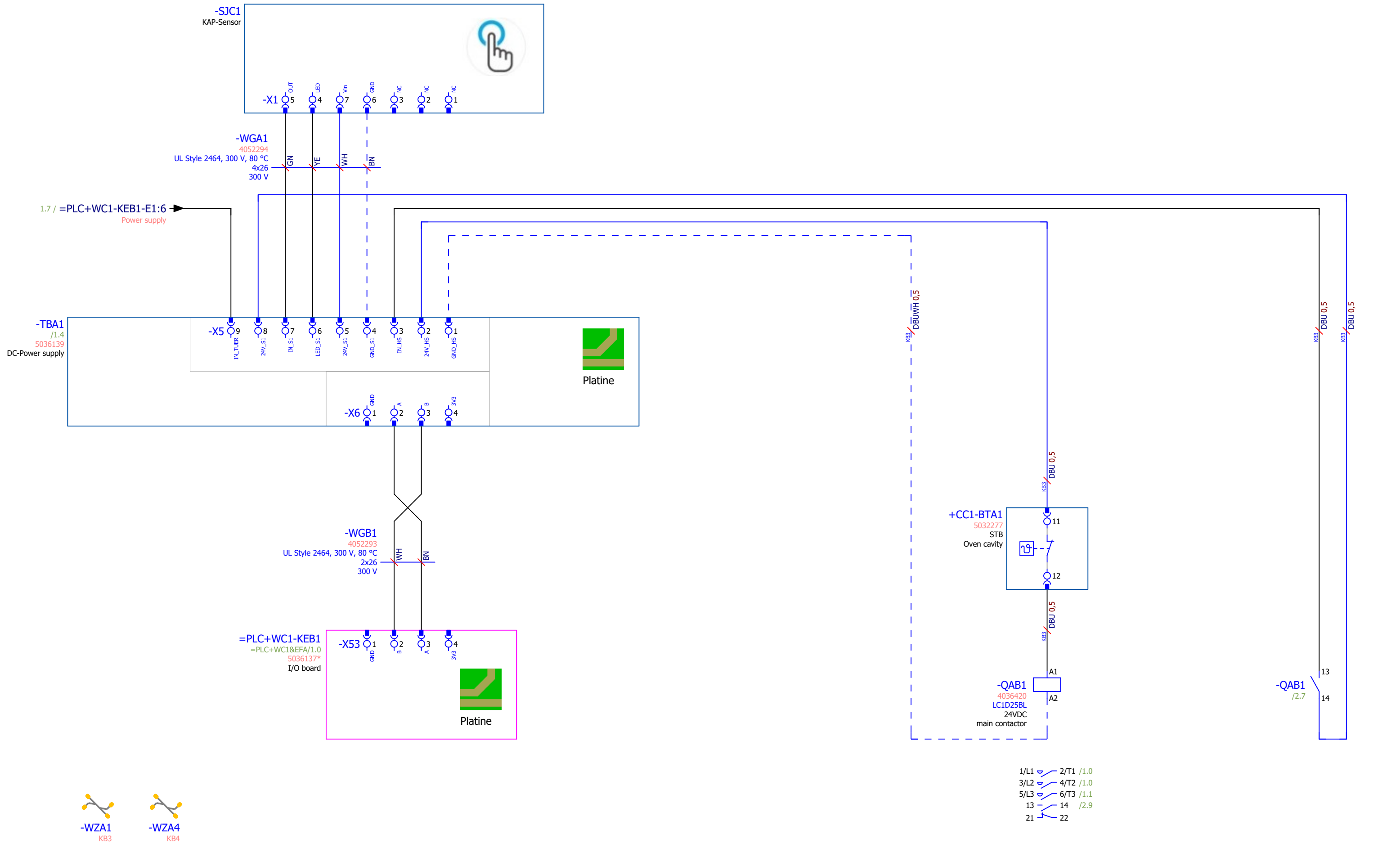
			Date	28.05.2025	Observe protection notices in accordance with ISO 16016	= Control Overview Expansion board	Further articles see BOM of materials	articlenumber circuit diagram		Combi oven		=	CS1	PLC		
			Ed.	ALTENDORF.A				5336500-10029_00		Control		=	PLC			
			Appr	STENZEL.K				articlenumber device		Project description		Wiring compartment			+	WC1
Modification	Date	Name	Original					17.0		E	Electrical engineering Functional overview documents		&		EFA	3



			Date	28.05.2025	Observe protection notices in accordance with ISO 16016	= Control Wiring overview	articlenumber circuit diagram		Combi oven		==	CS1	PLC		
			Ed.	ALTENDORF.A			5336500-10029_00		Control		=	PLC			
			Appr	STENZEL.K			articlenumber device		Project description		Wiring compartment			+	WC1
Modification	Date	Name	Original				17.0		E	Electrical engineering Circuit documents		&		EFS	1



			Date 28.05.2025	Observe protection notices in accordance with ISO 16016	= Power supply Power supply	artikelnr circuit diagram 5336500-10029_00	Project description	Combi oven		== CS1
			Ed. ALTENDORF.A					Power supply		= SU1
			Appr STENZEL.K					Mounting panel		+ MT1
Modification	Date	Name	Original					17.0		E



* further articles see Bill of materials

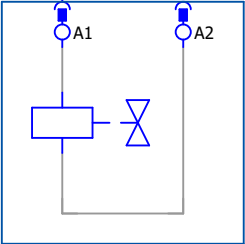
			Date28.05.2025	Observe protection notices in accordance with ISO 16016	= Power supply Power supply	articlenumber circuit diagram 5336500-10029_00	Project description 17.0	Combi oven Power supply Mounting panel Electrical engineering Circuit documents	== CS1 = SU1 + MT1 & EFS	2	SU1
			Ed. ALTENDORF.A								
			Appr STENZEL.K								
Modification	Date	Name	Original			articlenumber device					



=PLC-KEB1
=PLC&EFA/1.0
5036137*
I/O board

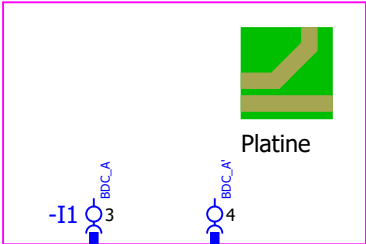


-QMA1
=PLC/1.5
A13
Solenoid valve
Water injection

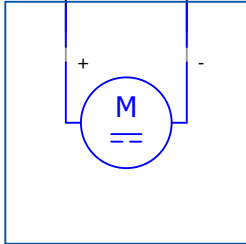


-WZA2
KB21

=PLC-KEB1
=PLC&EFA/1.0
5036137*
I/O board

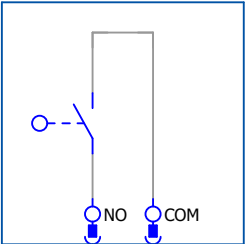


-MAA1
24V DC
A15
Dehumidifier valve

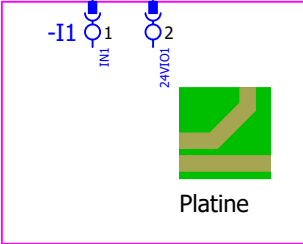


-WZA3
KB23

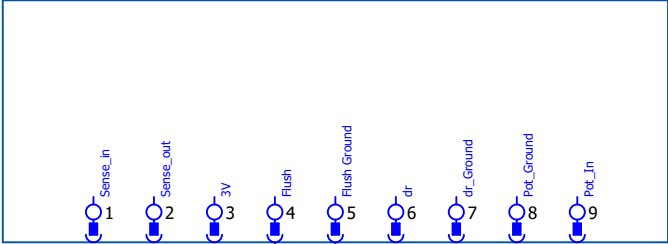
-BGA1
=PLC/1.0
S23
Switch
Dehumidifier valve



=PLC-KEB1
=PLC&EFA/1.0
5036137*
I/O board

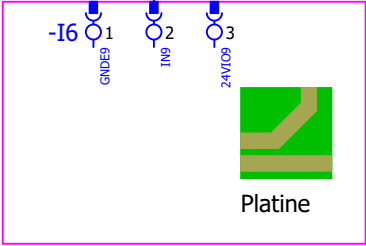


+EXT-PHA1
=PLC/1.7
BRITA Remote indicator unit

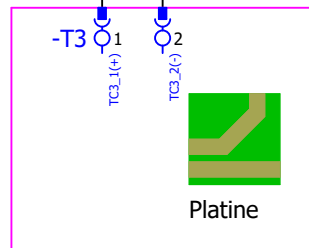
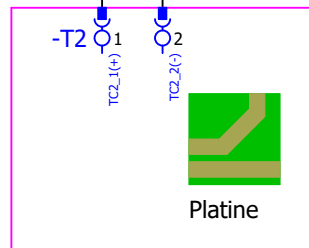
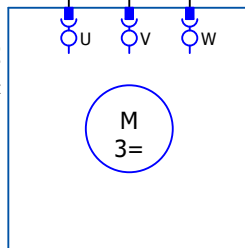
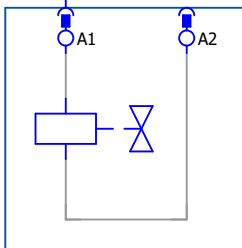
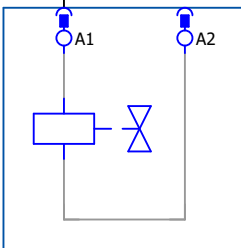
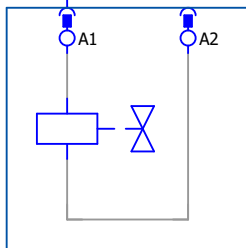
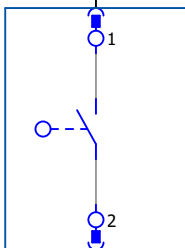
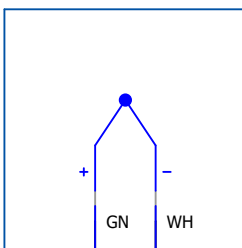
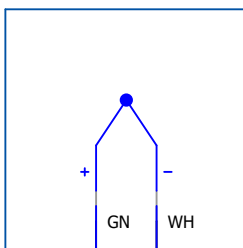
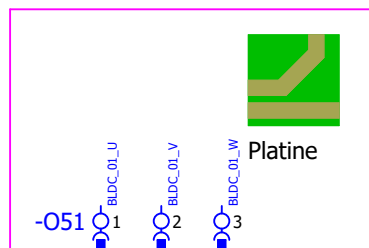
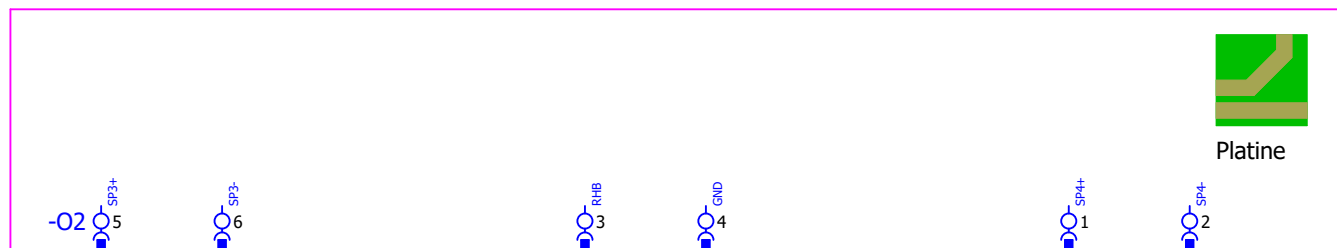


-WGA1
2x0,5

=PLC-KEB1
=PLC&EFA/1.0
5036137*
I/O board



* further articles see Bill of materials



Observe protection notices in accordance with ISO 16016

articlenumber circuit diagram	5336500-10029_00
articlenumber device	

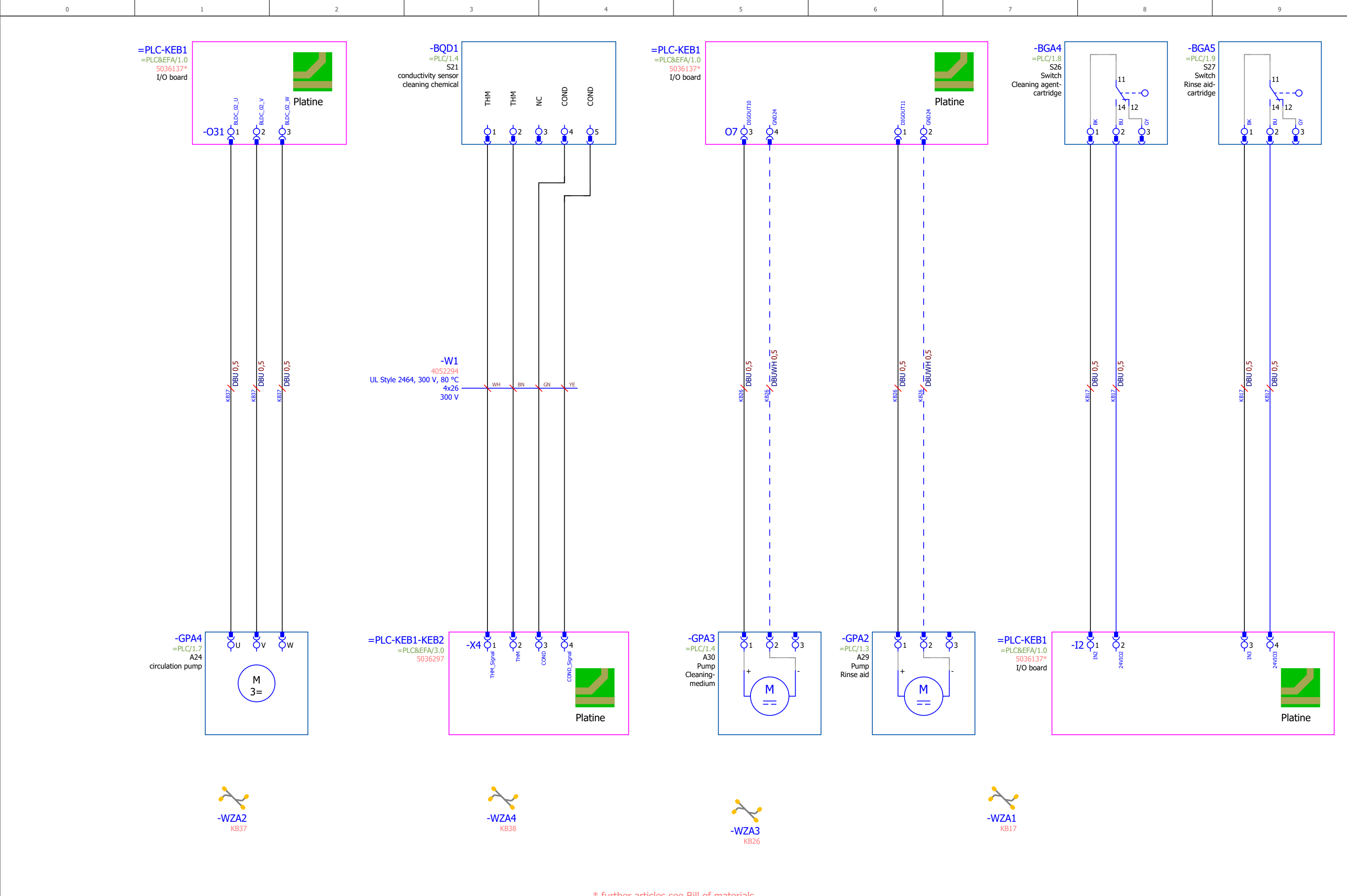
Project description

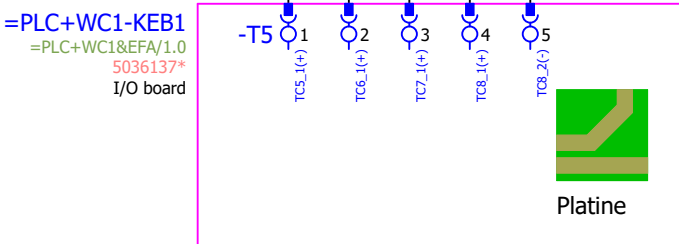
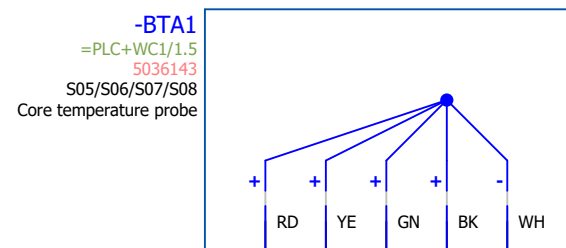
E

Electrical engineering Circuit documents

==	CS1
=	COL
+	WC1
&	EFS

col

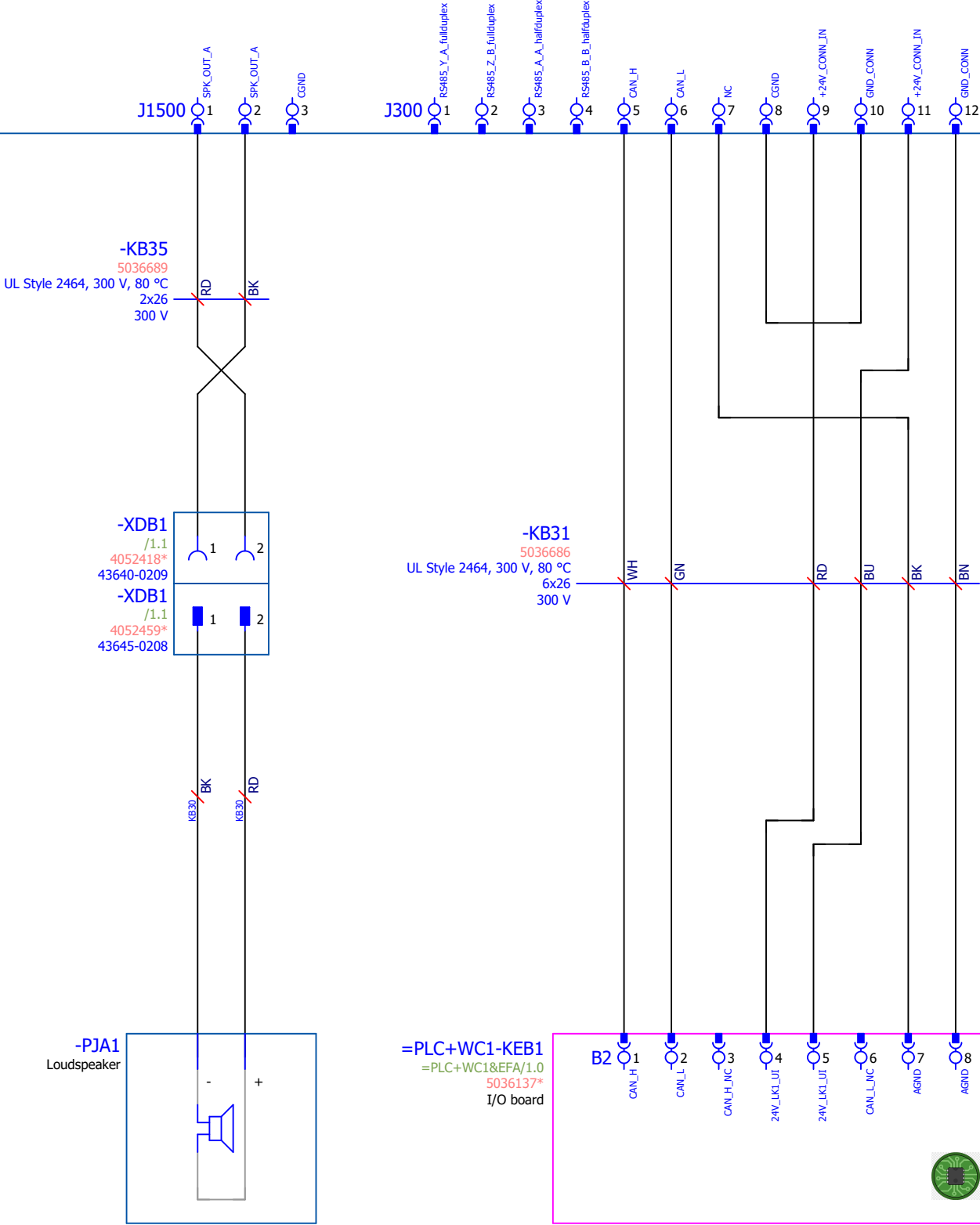




* further articles see Bill of materials

			Date 28.05.2025	Observe protection notices in accordance with ISO 16016	= Core temperature probe Sensor (Option)	articlenumber circuit diagram	Combi oven		= CS1	CT1	
			Ed. ALTENDORF.A			5336500-10029_00	Core temperature probe		= CT1		
			Appr STENZEL.K			articlenumber device	Project description	Oven cavity			+ CC1
Modification	Date	Name	Original				17.0	E	Electrical engineering Circuit documents		& EFS 1

-PHA1
=PLC+WC1/1.0
/2.0
1805533
CUI-7"

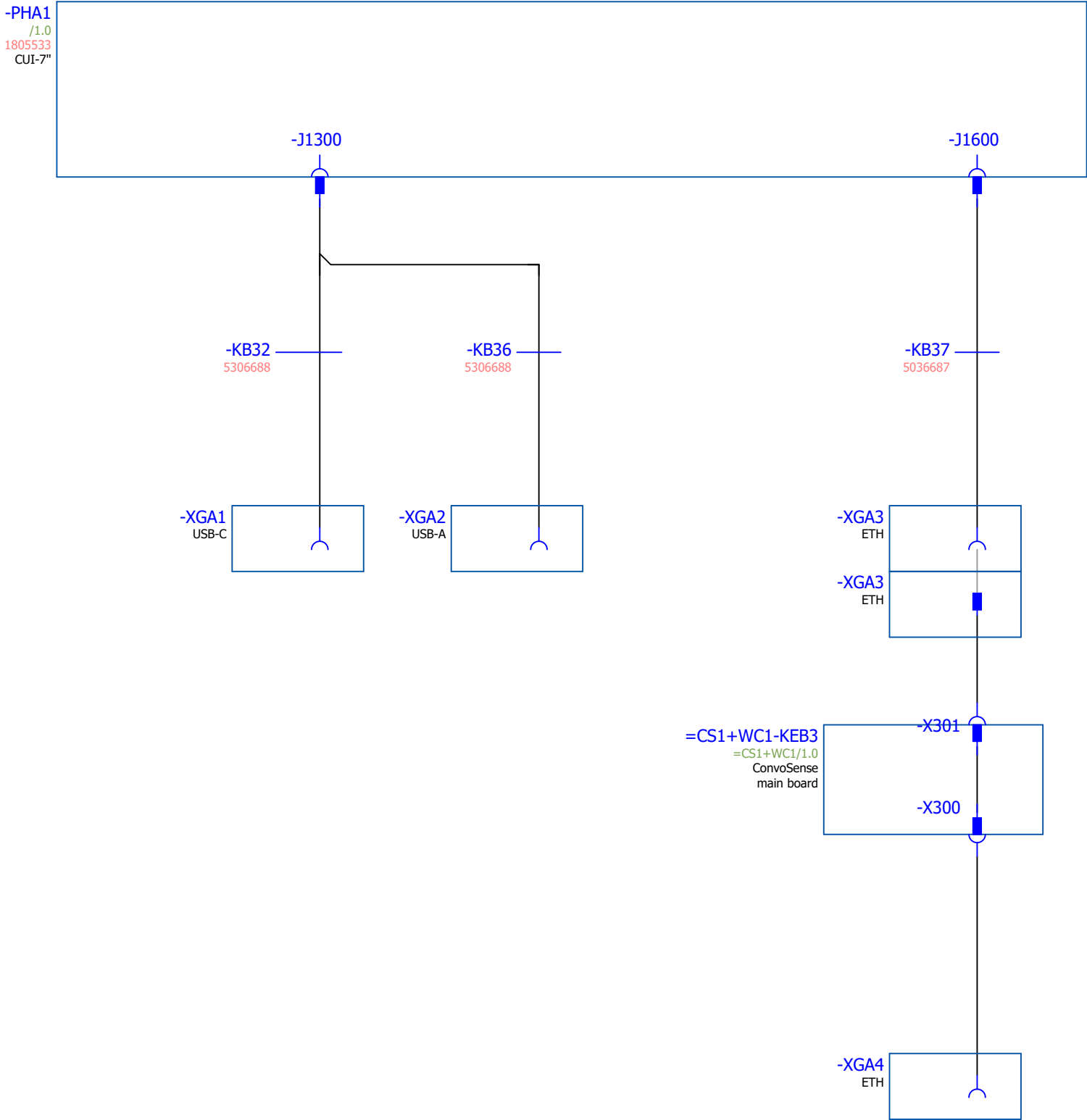


PE
=SUI/1.4 / =PLC+WC1-KEB1-X55:PE
Power supply



* further articles see Bill of materials

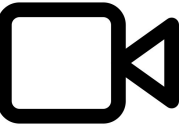
			Date	28.05.2025	Observe protection notices in accordance with ISO 16016	= HMI Control panel	articlenumber circuit diagram 5336500-10029_00	Project description	Combi oven	= CS1	HMI
			Ed.	ALTENDORF.A							
			Appr	STENZEL.K							
Modification	Date	Name	Original				articlenumber device	17.0	Mounting panel	+ MT1	
								E	Electrical engineering Circuit documents	& EFS	1



* further articles see Bill of materials

			Date28.05.2025	Observe protection notices in accordance with ISO 16016	= HMI Control panel	articlenumber circuit diagram	Combi oven	= = CS1	HMI
			Ed. ALTENDORF.A			5336500-10029_00	HMI	= HMI	
			Appr STENZEL.K			articlenumber device	Mounting panel	+ MT1	
Modification	Date	Name	Original			Project description17.0 E	Electrical engineering Circuit documents	& EFS 2	

CS1



CS1